



The quarterly
newsletter
of Sparks Reed
Architecture
and Interiors
of Tulsa

Winter 2018
Vol. 2, No. 4

1401 S. Denver
Ave., Suite B,
Tulsa, OK 74119

918.884.6007 (voice)
877.276.1242 (fax)



Banquet and activities room
at the Wesley Foundation at OSU (Stillwater, OK)

A year of incredible milestones

It is hard to believe 2018 is over. What an interesting year! Reminds me of an old fortune cookie, "May you live in interesting times," which we are.

I first want to thank each one of you for making 2018 a year full of truly incredible milestones. Sparks Reed is entering its eighth year. Wow! Where has the time gone? I want to thank each of our clients, team members, consultants, and contractors for making this an amazing journey. SR has grown from our three founding partners to a team of 10 merry souls, with fantastic talents and the desire to serve our clients and communities with outstanding design. We have also added a partner firm Edmondson Reed and Associates, a TERO-certified firm which has five more merry souls that specialize in Native American projects.

I want to take a moment to reflect on the outstanding projects that opened their doors this past year to the public.

The Wesley Foundation Student Center project is a huge success on the famous Stillwater Strip. Our client, The Wesley Foundation, continues to share great things about this. Special thanks to Gary Sparks for running the CA for this project and working diligently with the owner and contractor.

Kellyville Public Schools opened three new facilities this year and became one of our biggest fans, showing off our facilities to everyone they can. I want to thank the entire design and construction team lead by our fabulous client, Joe Peirce, superintendent of schools for KPS. Thanks to everyone's dedication to Kellyville Public Schools! They gave our firm an award and special gift, which

sits proudly on a shelf in my office.

Three new car dealerships opened this year: Owasso's Glover Chrysler Dodge Jeep, a Honda dealership in Muskogee, and a new Chevy dealership in Miami, OK. Tulsa Tech has opened new classrooms and labs on three local high school campuses, thanks to the outstanding work of Kelli and Emily.

Then there are the outstanding projects that we spent 2018 designing and are currently under construction.

Tulsa Public Schools' McLain High School arena is one of the most innovative designs and largest structures we have under construction. We should all take great pride in this project, and I am very proud of our entire team for its efforts in making this an amazing facility for TPS. This was a very challenging site between utilities and very bad soil conditions. Nevertheless, to everyone's credit on our team, we developed great solutions to very difficult problems and turned them into great architecture. I hope you all know just how excited our client and their user groups are about this project. The entire McLain community is bursting with pride and cannot wait to get into their new facility.

Putnam City Schools has three new SR-designed facilities. The completed PC West baseball stadium, the PC West football stadium (scheduled for completion in April) and the PC original high school gym (scheduled for completion in February) will be amazing. Our client, the PCS Bond Department, has been raving about these projects. They are very excited about their new facilities and have been



David Reed

See MILESTONES, Page 15

Going Multi-Purpose

In nearly all sectors, the architecture and construction industries have watched clients shift from single- to multipurpose building designs.

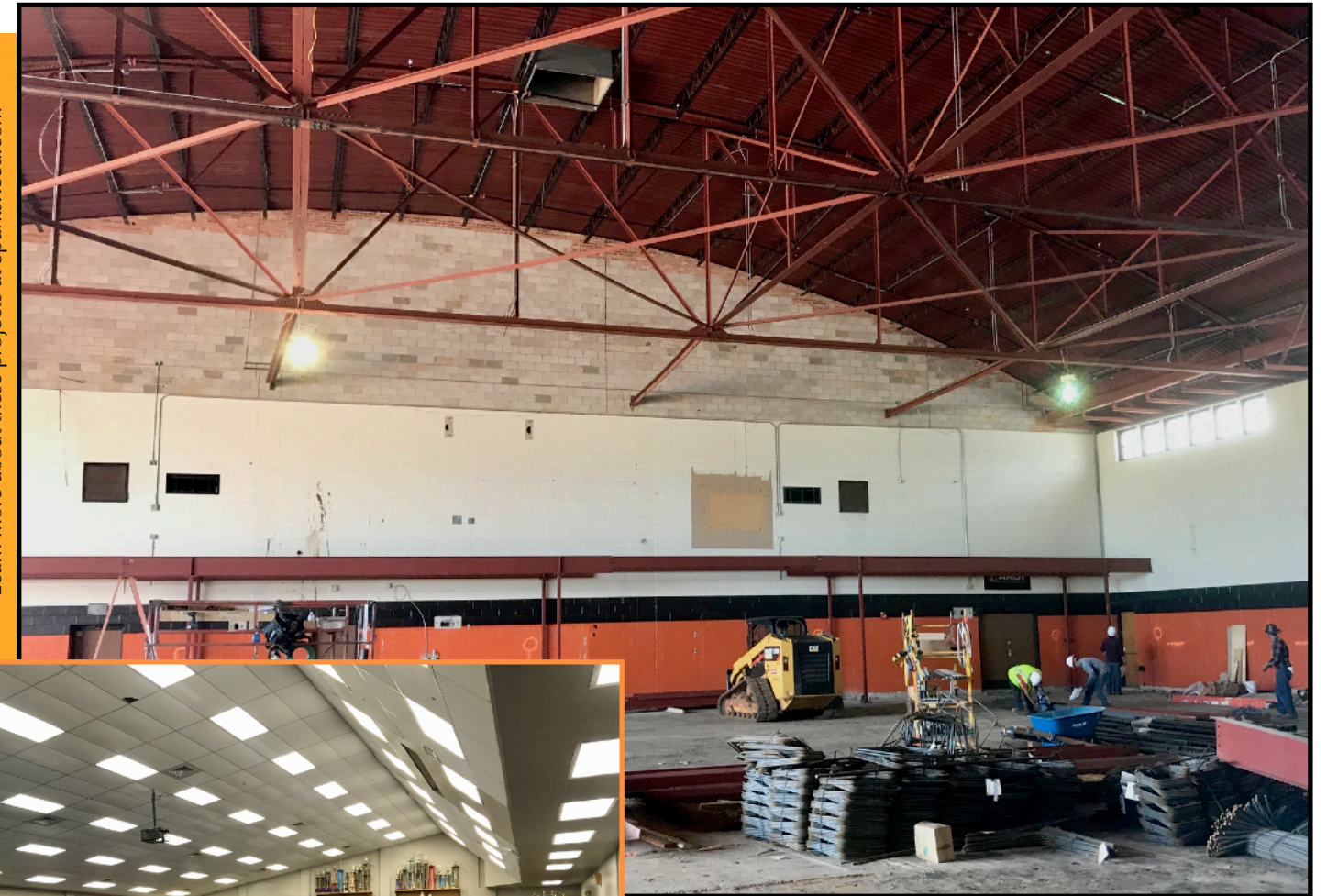
Only professional sports or brand-focused products seem determined to stay off this course – at all other levels, from the college or high-school gymnasium to the local church, downtown office building, corner retailer, and neighborhood home, users are turning to open, modular structures able to meet an ever-changing variety of applications and needs.

This multiuser movement reflects several strong driving forces:

- Multiple and diverse user groups needing facility access.
- Changing consumer participation trends and demographic interests, mixed with rising competition among and for audiences and finicky consumer spending.
- Lofty consumer, user, and stakeholder quality / service expectations.
- Infrastructure concerns at several often-conflicting levels: technology, accessibility, sustainability, durability, affordability, aesthetics.
- Heightened revenue production needs, often coupled with dwindling donations and pressure to contain building budgets / operating costs.
- Tightened stakeholder oversight.

Multipurpose facilities satisfy these points by allowing owners to do more with less. Such

Learn more about these projects at SparksReed.com



Three multiuse Sparks Reed projects

Top: Renovation and expansion of the Putnam City (OK) High School gymnasium

Center: Completed renovation of the Sapulpa (OK) High School band room.

Bottom: Banquet and activities room at the Wesley Foundation at OSU (Stillwater, OK).

Photos by David Reed and Kirby Lee Davis



buildings provide greater flexibility with fewer long-term commitments.

This movement results in some ironies. Despite its multipurpose design, the building must still:

- Provide the ideal environment for the subject to connect with and satisfy its audience, no matter how different these subjects/audiences might range from one day to the next.
- Deliver the consumer's demand for a high-quality, authentic experience.
- Exceed all anticipated creature comforts, so that audiences will enjoy and desire participation and attendance.
- Satisfy all user accessibility, safety, and security needs without raising consumer concerns or interest.
- Deliver positive cash flow without lowering anyone's expectations.

Bottom line, the structure must play a positive role in the success of its user, no matter the user or its purpose. The structure must secure this relationship on a cost-effective basis for all concerned.

To achieve these results, efforts must start with the hiring of an architectural and interior design firm experienced in multipurpose design. Such an innovative, resourceful team adds value by identifying and creating opportunities while still in the building's development and design process to reduce structural operating and management costs while maximizing potential usage and revenue benefits.

Sparks Reed is just that team. With more than 50 years of professional experience, the executives behind Sparks Reed have drawn countless kudos for their ability to help clients identify project needs, build a stakeholder consensus, and deliver a sustainable landmark valued for generations. They utilize a proven system backed by cutting-edge technology and strong relationships in the materials and construction industries.

Co-founders Gary Sparks, David Reed, and Jill Selman started Sparks Reed in 2011 with a strong track record in architecture and interior design, their clients ranging from churches and memorials to commercial buildings and sports facilities. Sparks Reed has since built on that tradition. Several Tulsa and Oklahoma City area high schools boast of SR-designed stadiums and arenas. Oral Roberts University and the University of Central Oklahoma tout SR-crafted fields and support structures. Multiple Tulsa area automotive dealerships attribute their efficient, sparkling showrooms to Sparks Reed's skills. Other SR highlights range from law office, service center, and corporate headquarters renovations to public parks and commercial district traffic generators.

Through all these efforts, Sparks Reed earned a reputation for finding creative solutions to difficult situations. Its team achieves this by listening to client needs and desires, studying their operations, and crafting efficient, cost-effective designs that embrace both long-lasting technologies and rich traditions. By delivering what a client needs to become the very best they can be, Sparks Reed principals have completed large and small public and private projects totaling more than \$500 million, with many, many more underway.

Imagine what they can do for you.

Multipurpose issues at a glance

Mission

A multipurpose design should target multigenerational usage, for keeping a building's materials in use instead of a landfill or recycling system is the greatest eco-friendly move an architect or builder may contribute through a project. This involves using proven materials, fixtures, and furnishings that instill a healthy, engaging atmosphere, adapt to different needs, clean easily, wear well, and protect the environment.

Balance

Structural designs must balance flexibility in long-term core systems (utilities, lighting, traffic flow, safety, security) with durability in more short-term elements (utility outlets, modular walls/furnishings, fixtures).

Structural designs should enable efficient, cost-effective changes in floor plans/technology/infrastructure to maximize effectiveness. A design must not just satisfy the user's current and future needs – it must engage with and strengthen its user, furthering the user's long-term success.

Open space designs

Building designs should exceed existing government and insurer regulations while anticipating current and future traffic flow, safety, and security concerns. To keep interiors functional and invigorating, new commercial and residential designs often employ varied floor levels, modular walls/furnishings, multiple utility outlets, interior gardens/water features. Many interior spaces are shrinking, maximizing space through flexible/retractable furnishings to meet display/storage needs.

Materials

Building designs should involve a mix of proven and new materials to provide efficient, cost-effective structures that exceed user expectations and needs in terms of function, maintenance, durability, form. Sustainability efforts must balance the user's immediate and long-term outlooks. Prices on sustainable heat/air/water technologies are falling as usage grows. Recycled products may be found in more and more building material categories. New wood products have replaced concrete in many structures, including skyscrapers.

Technology

Building designs must prepare for opposing needs under the same roof. They must accentuate all current and anticipated forms of connectivity to maximize potential effectiveness, while allowing occupants to protect certain areas from eavesdropping, interference, and interruptions. Artificial intelligence/communications systems may require protected avenues that bridge both areas without compromising either, as will associated power, heating, cooling, and water delivery systems.

Affordability

Building designs must meet the user's current and future needs/demands with materials and spaces that maximize efficiency and cost-effective operation.

Regulations

Below-ground structures, green rooftops, and water conservation system efforts have gained favor where regulations allow. These efforts have expanded into vertical landscaped walls, interior gardens, and solar tiles with onsite power storage systems, although some state/local regulations restrict their usage.



Trends in sports facilities

Multipurpose

For many years stadiums and arenas have included offices, classrooms, club rooms, fitness centers and health care clinics, trophy rooms, and video production centers. Now visitors may find gardens, climbing walls, swimming pools, communications hubs, social media programming sites, retail and restaurants, banquet and conference facilities, hotels, lockup quarters, even chapels.

Structure

A successful multipurpose design boasts improved access to the event floor, roof-loading capacity, environmental controls, event space acoustics, and social media connectivity. Earth walls, recycled shipping containers, and hillsides have been incorporated into some new designs. Tech improvements allow for reduced equipment and storage space. Portable wireless scoreboards provide different usages to fit space configurations.

Lighting

New high-intensity lights provide superior illumination, compact fixtures, and energy/cost savings. LED systems continue to improve their efficiency and programmability. Many designs use translucent fiberglass wall panels and skylights to emphasize natural lighting for efficiency and comfort, minimizing the use of energy during the daylight hours on light fixtures. Solar light tube systems may harvest rooftop sunlight to illuminate an area without heat gain.

Surfaces

More durable and cost-effective surfaces are continually being developed. New milling technologies and water-based varnishes provide wood flooring with greater durability and a lower environmental impact. Improvements in synthetic floors provide more versatility. New equipment options include volleyball poles that fold down from the ceiling or telescope up from the floor.

Seating

New designs mix customer comfort and functionality. Bleacher designs put less stress on floors. Modular systems provide seat backs, vandalism-resistant materials, and decorations that display team colors or logos, whether folded or in place. Some designs allow users to stand without obstructing the view of those behind them. Some operators also find "standing room only areas" a popular alternative to seating.

From basketball to rallies and musicals

Booker T. field house demonstrates the value of multipurpose usage

Many people expect their local high school gymnasium to handle not just basketball, but wrestling, volleyball, and just about any other indoor sport. Many schools stretch their building's multipurpose aspect to pep rallies and assemblies.

Booker T. Washington High School, Tulsa, OK, uses its six-year-old gym for all these purposes and more. The Nathan E. Harris Field House, home of the Hornets, has staged musicals and concerts, hosted baby showers and wedding parties, and served countless other community group meetings.

"Requests come not just from our local neighborhoods," said Assistant Principal Matt Myers, who oversees campus building usage. "We get inquiries from all over the city. Just last week we had representatives from the All-American Bowl ask about using the building because one of our boys is on that team."

It helps that this 1514 E. Zion St. field house provides more than a sizable wood floor with bleachers seating 1,500+ people. Designed by David Reed, a principal of Sparks Reed Architecture and Interiors, this 56,400-square-foot brick structure offers:

- A hospitality suite able to serve more than 20 individuals.
- Offices for the school's athletic department and coaches.
- A pitching and batting room.
- A pom and cheer practice room.
- A trophy hall used by the entire school.
- A weight room.
- Locker rooms for every BTW team.
- Storage and other spaces.

That gives the field house enough flexibility to meet almost any community need, an attribute that helps Booker T. fulfill its mission.

"One big responsibility of any public school is to serve as



a place where the community may come together," said Myers. "This field house helps us to do that. And it's flattering whenever people call in and say, 'I want to host this event at your school.'"

Adding this facility came at a cost, for the \$11.2 million project replaced a historic gym where Kenny Monday never lost a wrestling match and Waymon Tisdale ruled northeastern Oklahoma's basketball world. But soon after Flintco finished construction of the new Hornets' nest in February 2012, the beautiful field house won the hearts of alumni and fans. It also helped the 2017 women's basketball team give Booker T. another state championship.

"This space is very precious to our community," said Myers. "And there's lots of pride in this school for this facility, to say the least. There's a very, very obvious cultural affinity for alumni and current students that comes with being a Hornet."

Designing truly PAWsh Palaces

Sparks Reed joins with AIA for STEM school fundraiser

Sparks Reed Architecture and Interiors teamed up with general contractor Nabholz and Mark Twain Elementary to compete in November's PAWsh Palaces contest, a fundraiser by the American Institute of Architects Eastern Chapter and the Tulsa SPCA to raise funds for the Tulsa Regional STEM Alliance.

This competition to build fun houses for pets began in July with the formation of seven teams, each made up of a Tulsa area architectural firm, a general contractor, and a Tulsa Public Schools member specializing in science, technology, engineering, and math (STEM) training. The construction professionals helped these students design homes for their dogs and cats. As those tabletop models progressed, the architects crafted their own life-size pet palaces, which their contractor teammates built.

"We have such great architects in Tulsa, and such great architecture, we just thought it would be great to bring this type of event to our city," said Mindy Tiner, executive director of the Tulsa SPCA. "We thought this would be a great way to bring kids into the equation as well. Education is a big part of what we do at the Tulsa SPCA."

David Reed, a principal at Sparks Reed, worked with his daughter Makayla, a cat owner, to design the purr-fect penthouse. It ended up as the competition's only prototype focused on felines.

"We tried to make it a sculptural piece of furniture that cats could climb on," said Reed, 2018 president of the AIA Eastern Oklahoma chapter. "It kind of looks like something you might see at Ikea."

SPCA executives displayed the seven prototypes, along with the top school designs, for two weeks at Tulsa's Woodland Hills Mall. Observers paid \$5 to vote on which PAWsh Palaces team presentation they like most. Each vote gave participants one ticket in a raffle to win their chosen prototype. The three teams receiving the most votes won prizes of \$1,000, \$500, and \$250 for their schools. The top prize went to SGA Design Group, Stava Building Corp., and Christa McAuliffe Elementary.

"We were thrilled with the level of participation from our architecture community," said Lindsey Ellerbach, executive director of the AIA Eastern Oklahoma chapter. "The houses are all so creative and different from one another."



The PAWsh Palaces exhibit at Woodland Hills Mall, with the Sparks Reed entry inset.

Photos by Kirby Lee Davis

Merry Christmas!

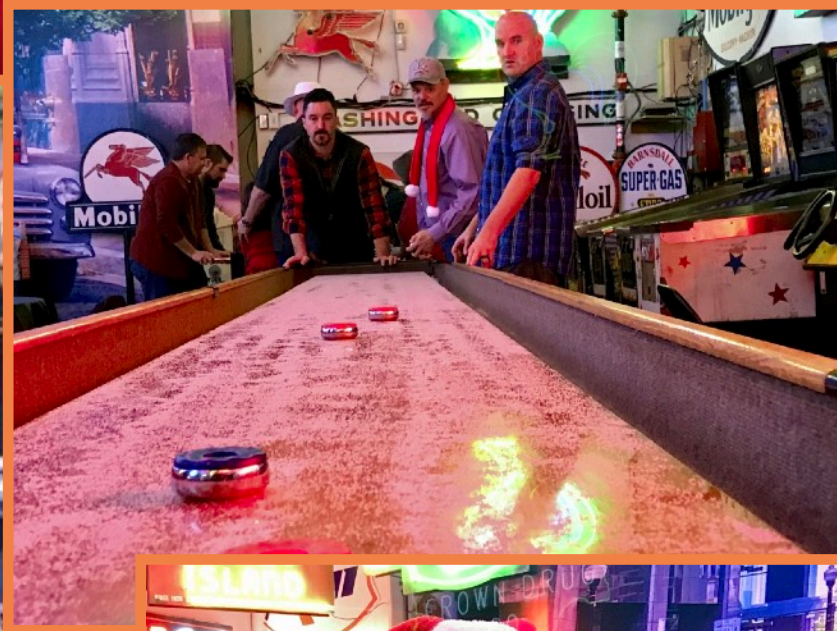
Sparks Reed joins with its Tulsa neighbors to celebrate the holiday season



Sparks Reed, Edmondson Reed and Associates, and CJC Architects met Dec. 13 at the Stokely Event Center for a joint Christmas party.



More photos by Kirby Lee Davis on next two pages!



Photos by Kirby Lee Davis

Milestones

Continued from Page 2

so complimentary of our SR team. We look forward to more opportunities to work with this great client.

Also, there's the Hard Rock casino four in Catoosa. Wow, what a fast-paced, rollercoaster ride this has been! The Hard Rock is a project our ERA team is leading and doing a great job.

Then there are the projects we have drawn this year and have not started construction yet: the Rogers High School stadium, East Central HS arena, Victory Christian, OBU stadium and Indoor tennis, Hard Rock hotel tower interior renovation, Osage Casino masterplans for three different sites, a new Osage office building, a multifamily residential development in Lake Las Vegas, and a hunt club with cabins, pavilion and lodge in Bristow.

All in all, 2018 was a great year at Sparks

Reed. We added new clients and projects with existing clients while growing our team. We have added to our family, thanks to Jun and her husband for bringing baby Mia into our world. I have been honored to serve not only our clients and team members over the past year as managing partner of Sparks Reed and CFO of Edmondson Reed, but I also had the opportunity to serve as the AIA Eastern Oklahoma president for 2018. I am grateful for the support of SR and ERA in letting me spend the necessary time fulfilling the duties and serving our local AIA chapter. It has been a great privilege to serve the profession that I love and feel so blessed to be a part of.

We look forward to 2019 and the outstanding opportunities in front of us. Thanks go to our wonderful clients, who put their trust in us to help them develop their great projects and bring them into the built environment. It is a tremendous honor to serve our community this way. It fills us with tremendous optimism for 2019 and what lies beyond.



the team you *trust*

Attributes
Attention to Detail
Work Ethic
Experience
Performance
Teamwork

Learn more at SparksReed.com!

Have a
wonderful day!
Please let us know what
you think!
Welcome
to our quarterly
newsletter!



Temporary home:
1401 S. Denver Ave., Suite B
Tulsa, OK 74119

918.884.6007 (office)
877.276.1242 (fax)

To: